

# GRAYHILL KEYBOARDS: DIFFERENT STROKES FOR DIFFERENT FOLKS

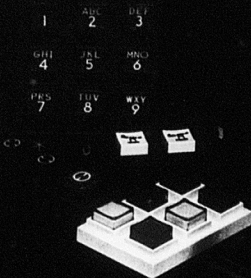
**SERIES 88** A short stroke sealed keyboard with excellent audible and tactile feedback. Colorful standard or custom-made graphics integrates this keyboard into your front panel. Coded outputs and low bounce characteristics easily mate with logic circuitry. Circle No. 191



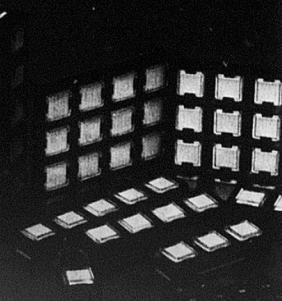
**SERIES 83-84-86** Short stroke standard 3x4 and 4x4 keyboard configurations. Choice of 1/2 inch or 3/4 inch button centers and post or flange mounting. Standard coded outputs—easily interfaces with logic circuitry. Excellent audible and tactile feedback. Circle No. 193



**SERIES 82** Long stroke high profile, wiping contacts. 1, 2, 3 and 6 button modules can be arranged for your specific needs. SPST to 4PST circuitry under each button; also available with coded outputs. Circle No. 192



**SYSTEM 87** Short stroke low profile, snap dome contact system provides tactile and audible feedback. Modular units—1 thru 6 buttons and 3x4 and 4x4 pads can provide any conceivable button arrangement. Circle No. 194



Your product is distinctive, and thus your keyboard needs are also likely to be unique. That's why Grayhill offers you four different keyboard families, with a host of options in each. We'll help you arrive at the keyboard solution that's most practical, attractive, and cost effective. Two of our four families—Series 83-84-86 and Series 88—are built around the popular 3 x 4 and 4 x 4 keyboard configuration; the other two—Series 82 and System 87—are modular, allowing you to create any unique keyboard arrangements.

Other features and options include:

- up to 3,000,000 operations per button
- standard or special coded outputs
- sealed or unsealed
- high or low profile
- short stroke or long stroke—dome or wiping contacts
- excellent audible and tactile feedback in dome contacts
- post, flange or PC mount
- 1/2", 11/16" or 3/4" button centers
- wide choice of legending modes
- color choices

For detailed information on Grayhill Keyboards, consult EEM, ask your local distributor, send for a copy of the Grayhill Keyboard Catalog or call us with your questions at (312) 354-1040.

**Grayhill**  
INC.

...the Difference Between Excellent and Adequate

561 Hillgrove Avenue • LaGrange, IL 60525 U.S.A.  
Phone: 312/354-1040 • TWX: 910-683-1850